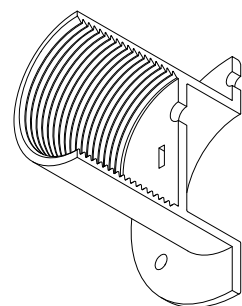
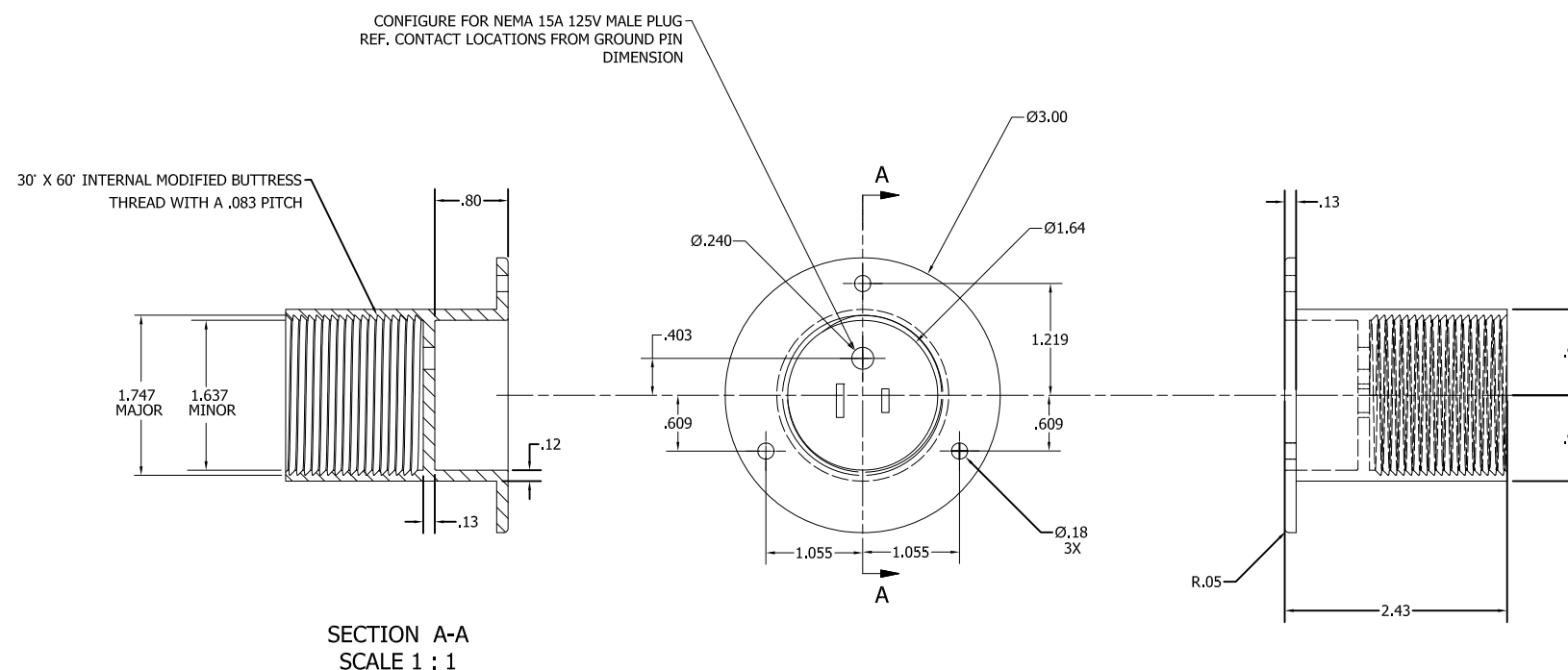
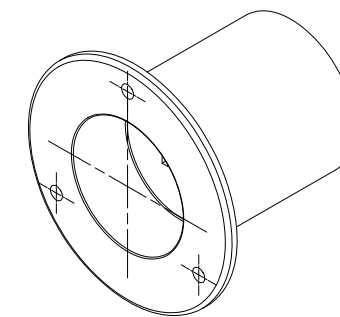


HOLE TEMPLATE

10 9 8 7 6 5 4 3 2 1

NOTES:  
1. MATERIAL: HDPE PLASTIC

REVISIONS				
ZONE	REV	DESCRIPTION	DATE	APPROVED
-	0	PROTOTYPE	6-13-08	L.M.B.



**-I MAIN HOUSING SHELL P/N 253-004I-3**

ADD SUFFIX:  
-WHT FOR WHITE  
-BK FOR BLACK

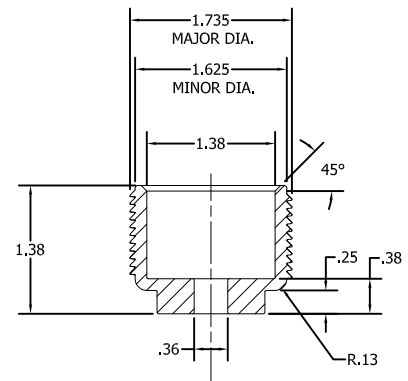
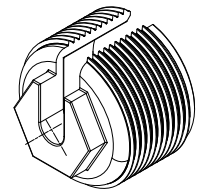
CAD GENERATED DRAWING

THIS DOCUMENT AND THE DATA DISCLOSED HEREIN OR HEREWITH IS PROTECTED BY COMMON LAW COPYRIGHT. IT IS RECEIVED IN CONFIDENCE AND SHALL NOT BE REPRODUCED, USED OR DISSEMINATED IN WHOLE OR IN PART TO ANYONE WITHOUT WRITTEN PERMISSION OF DELTONA TRANSFORMER CORPORATION.

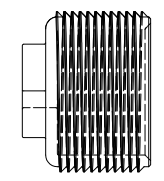
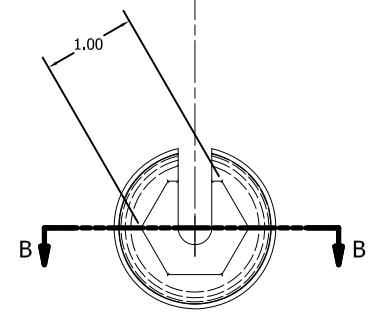
APPROVALS				DELTONA POWER SUPPLIES	
DRAWN BY:	DATE:	6-13-08		DIVISION OF DELTONA TRANSFORMER CORP DELAND, FLORIDA	
CHECKED BY:	DATE:			TITLE: AC POWER PORT	
UNLESS OTHERWISE SPECIFIED: DIMENSIONS ARE IN INCHES TOLERANCES FRACTIONAL: ±.004 XXX DEC: ±.01 XXX DEC: ±.005 ANGULAR: ±10° DO NOT SCALE DRAWING				SIZE: J	FSCM NO.: 0D3W7
QTY REQ'D PER NEXT ASSY	QTY	NEXT ASSY	USED ON	DWG NO.: 024-0004	REV: 0
APPLICATION				SCALE: 1/1	SHEET 1 OF 2

10 9 8 7 6 5 4 3 2 1

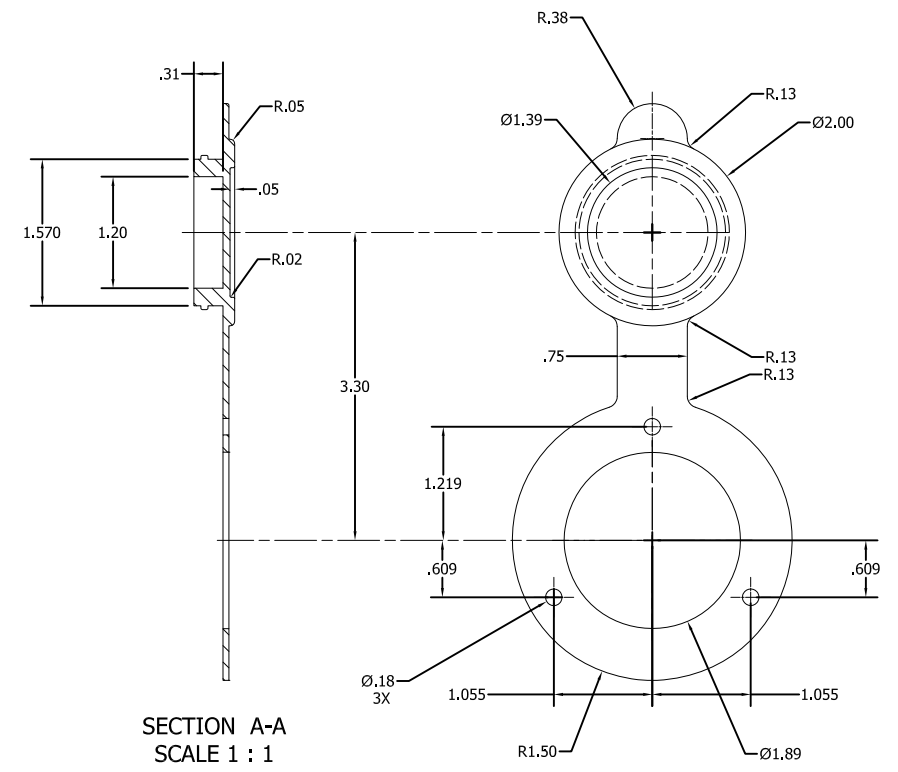
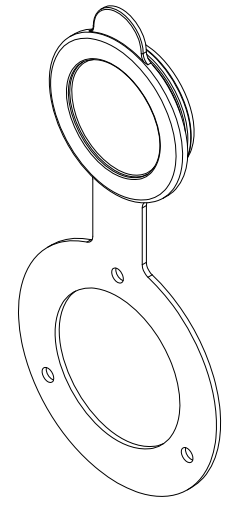
REVISIONS				
ZONE	REV	DESCRIPTION	DATE	APPROVED
-	0	PROTOTYPE	12/11/06	L.M.B.



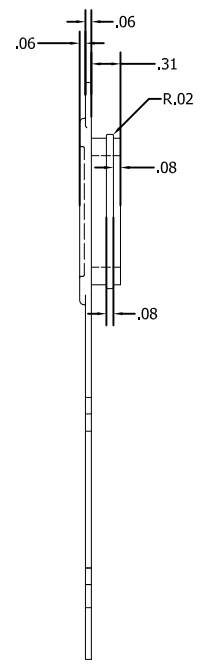
SECTION B-B  
SCALE 1 : 1



SECURING PLUG P/N 253-0041-5



SECTION A-A  
SCALE 1 : 1



GASKET-PLUG P/N 253-0041-7

THIS DOCUMENT AND THE DATA DISCLOSED HEREIN OR HEREWITH IS PROTECTED BY COMMON LAW COPYRIGHT. IT IS RECEIVED IN CONFIDENCE AND SHALL NOT BE REPRODUCED, USED OR DISSEMINATED IN WHOLE OR IN PART TO ANYONE WITHOUT WRITTEN PERMISSION OF DELTONA TRANSFORMER CORPORATION.